



M E R I D I A N

147 S. CHERRY STREET, SUITE 200 | WINSTON-SALEM, NC 27101 | P 336.722.1986 | F 336.723.3173 | MERIDIANREALTY.COM

1.59± AC | Zoned GB/LB

678 Friedberg Church Rd

Winston-Salem, NC 27127



For more information:

Spencer T. Bennett, CCIM

Spencer@meridianrealty.com

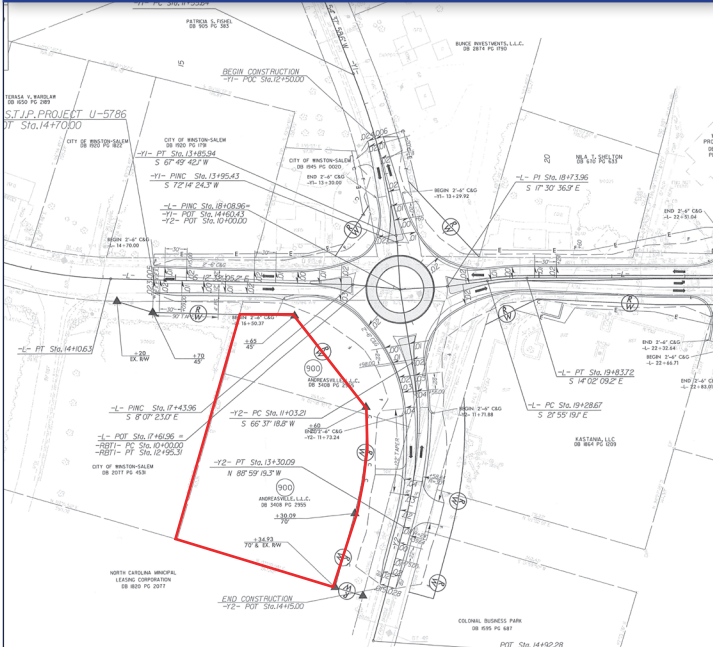
336.480.2327

FOR SALE: \$475,000

WWW.MERIDIANREALTY.COM

678 Friedberg Church Road | Winston-Salem, NC 27127

PROPOSED TRAFFIC CIRCLE



AERIAL



- 1.59± AC
- Traffic Circle
- Planned for 2029
- Zoned GB and LB
- Good topography
- For Sale: \$475,000



No warranty or representation (express or implied) is made as to the accuracy or completeness of the information set forth herein. All information is submitted subject to errors, omissions, change of price, prior lease or sale, and withdrawal without notice. All marketing material produced by the Meridian Realty Group is proprietary. Any reproduction is expressly prohibited.



THE MERIDIAN REALTY GROUP | 147 S. CHERRY STREET, SUITE 200 | WINSTON-SALEM, NC 27101

P 336.722.1986 | F 336.723.3173

WWW.MERIDIANREALTY.COM