



M E R I D I A N

147 S. CHERRY STREET, SUITE 200 | WINSTON-SALEM, NC 27101 | P 336.722.1986 | F 336.723.3173 | MERIDIANREALTY.COM

8± AC

0 Highway 311 Randleman NC 27317



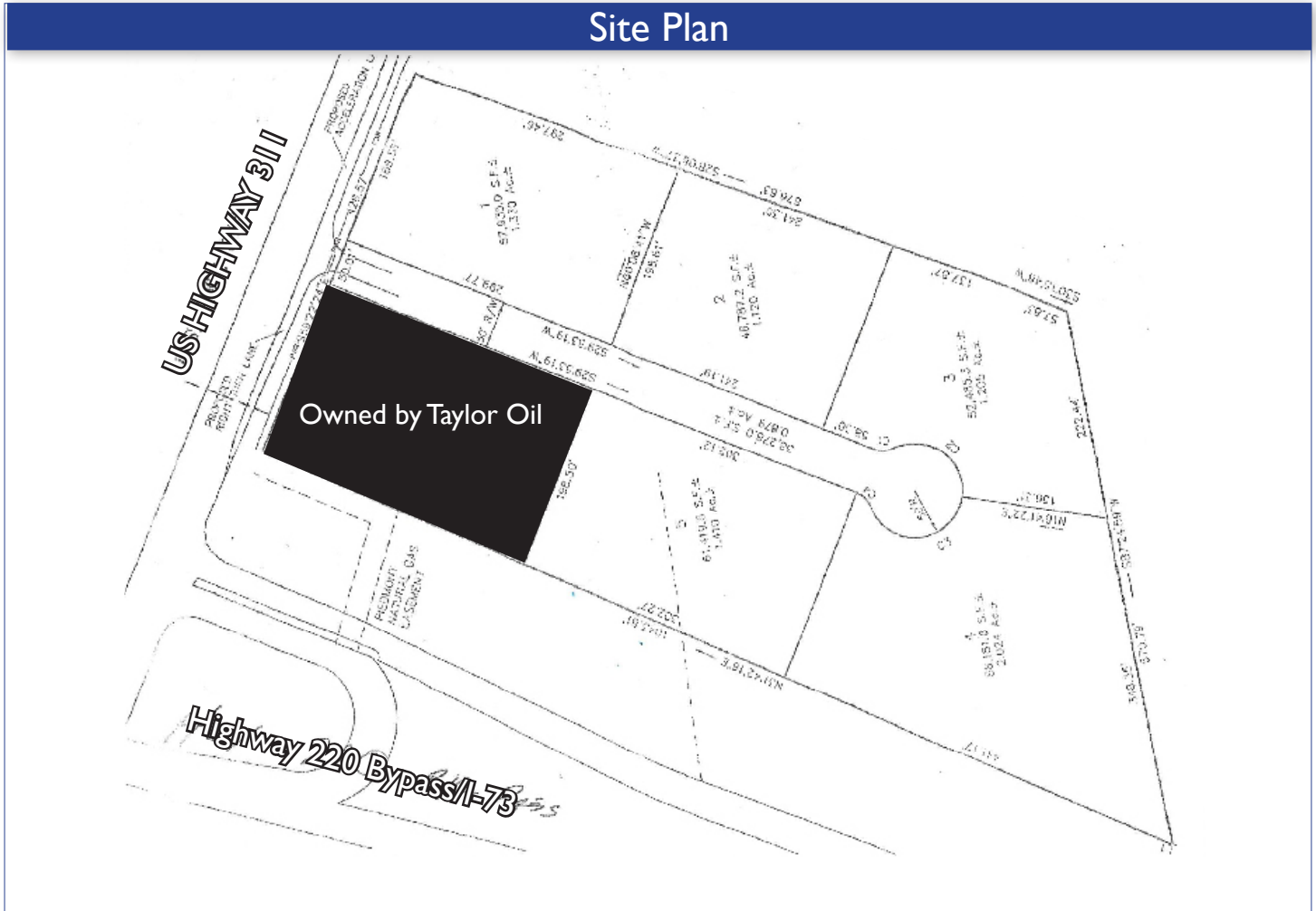
For sale is an 8± acre site on Highway 311 with direct access to Highway 220 bypass at Exit 81.

	1mi	3mi	5mi
	828	10,468	24,682
	1,169	6,469	9,876
	\$67,876	\$59,330	\$59,086

FOR SALE: \$350,000

For more information:
Spencer T. Bennett, CCIM
Spencer@meridianrealty.com
336.480.2327

Site Plan



1.33 ± AC



Direct access to I-73
(220 bypass)



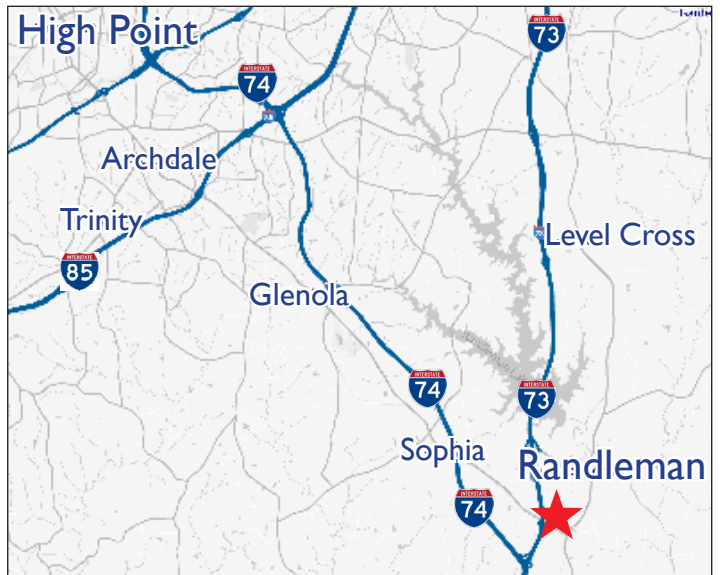
Zoned B-2



Good topography



For Sale: \$350,000



No warranty or representation (express or implied) is made as to the accuracy or completeness of the information set forth herein. All information is submitted subject to errors, omissions, change of price, prior lease or sale, and withdrawal without notice. All marketing material produced by the Meridian Realty Group is proprietary. Any reproduction is expressly prohibited.



THE MERIDIAN REALTY GROUP | 147 S. CHERRY STREET, SUITE 200 | WINSTON-SALEM, NC 27101

P 336.722.1986 | F 336.723.3173