



M E R I D I A N

147 S. CHERRY STREET, SUITE 200 | WINSTON-SALEM, NC 27101 | P 336.722.1986 | F 336.723.3173 | MERIDIANREALTY.COM

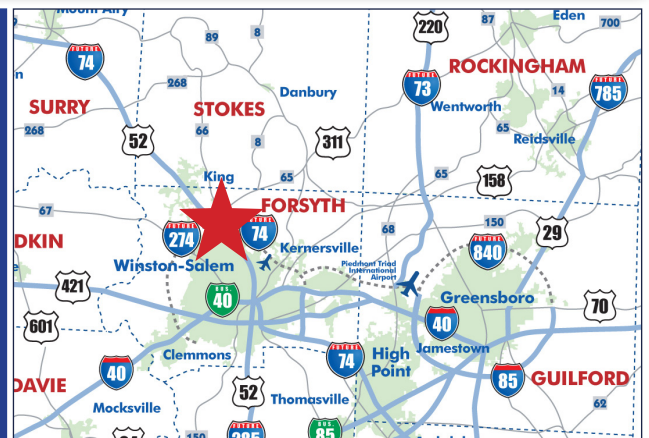
Flex Building

# 160 Carriage Court

Winston-Salem, NC 27105



- 13,724± SF Flex Building
- Expandable by 6,000± SF
- In Oak Summit Business Park
- Built in 2006
- 14 Parking Spaces
- Large dock area w/ 14'x20' door
- Sky lights



For more information:

**John L. Ruffin, CCIM**

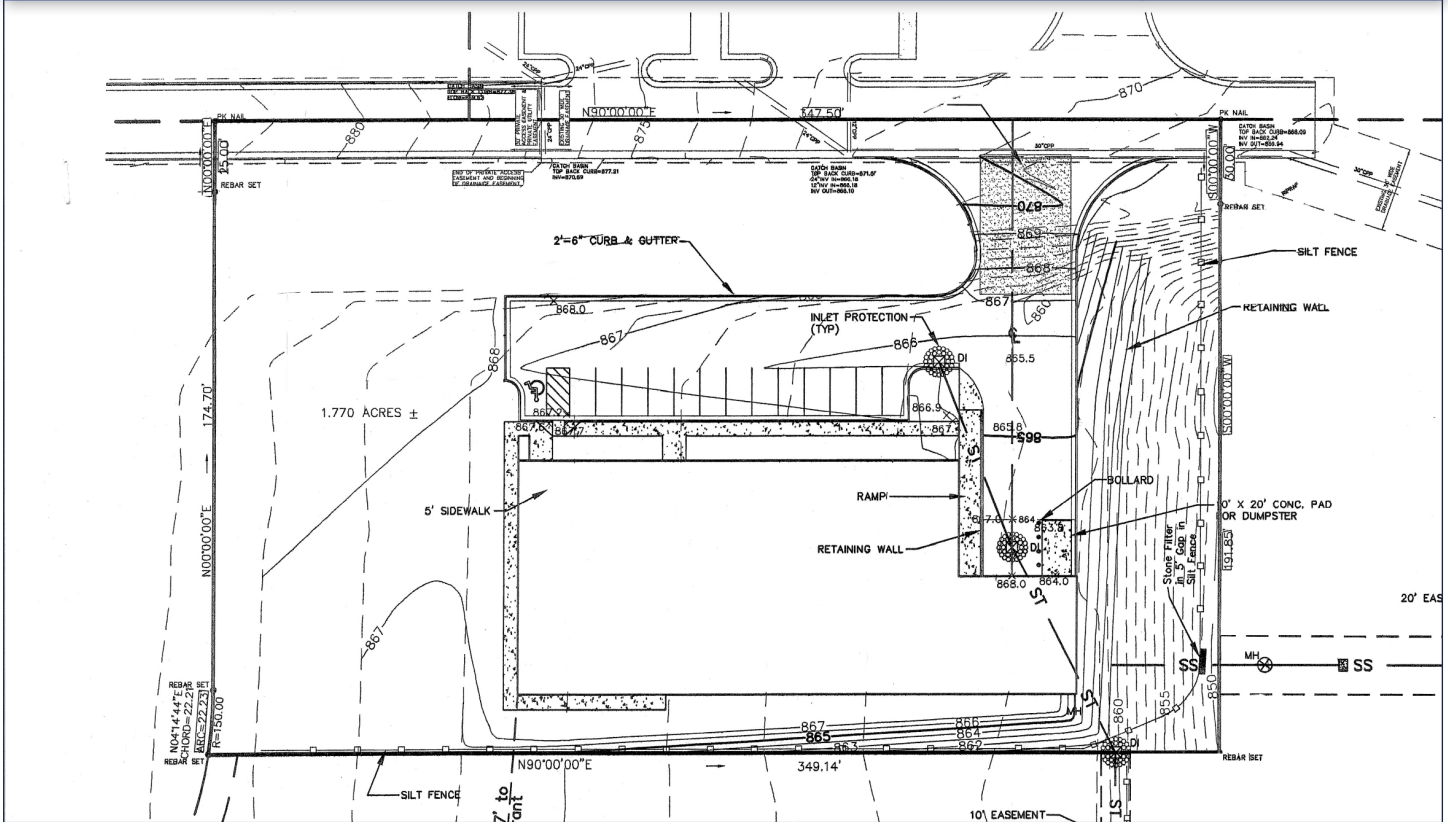
[Jruffin@meridianrealty.com](mailto:Jruffin@meridianrealty.com)

336.480.2081

**FOR SALE: \$1,800,000**

WWW.MERIDIANREALTY.COM

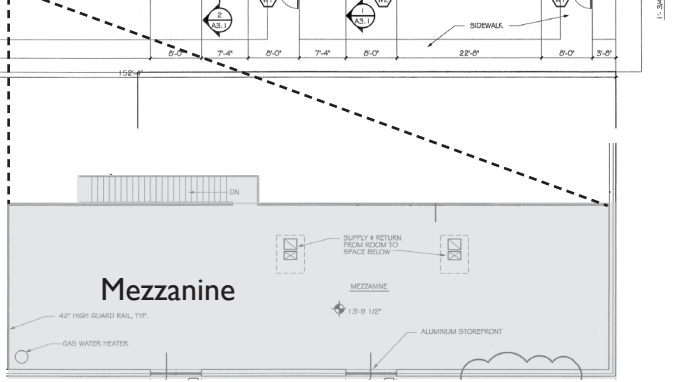
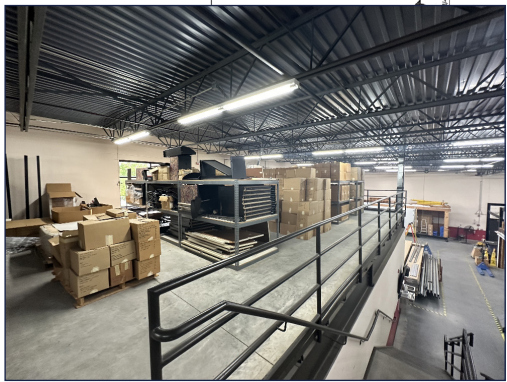
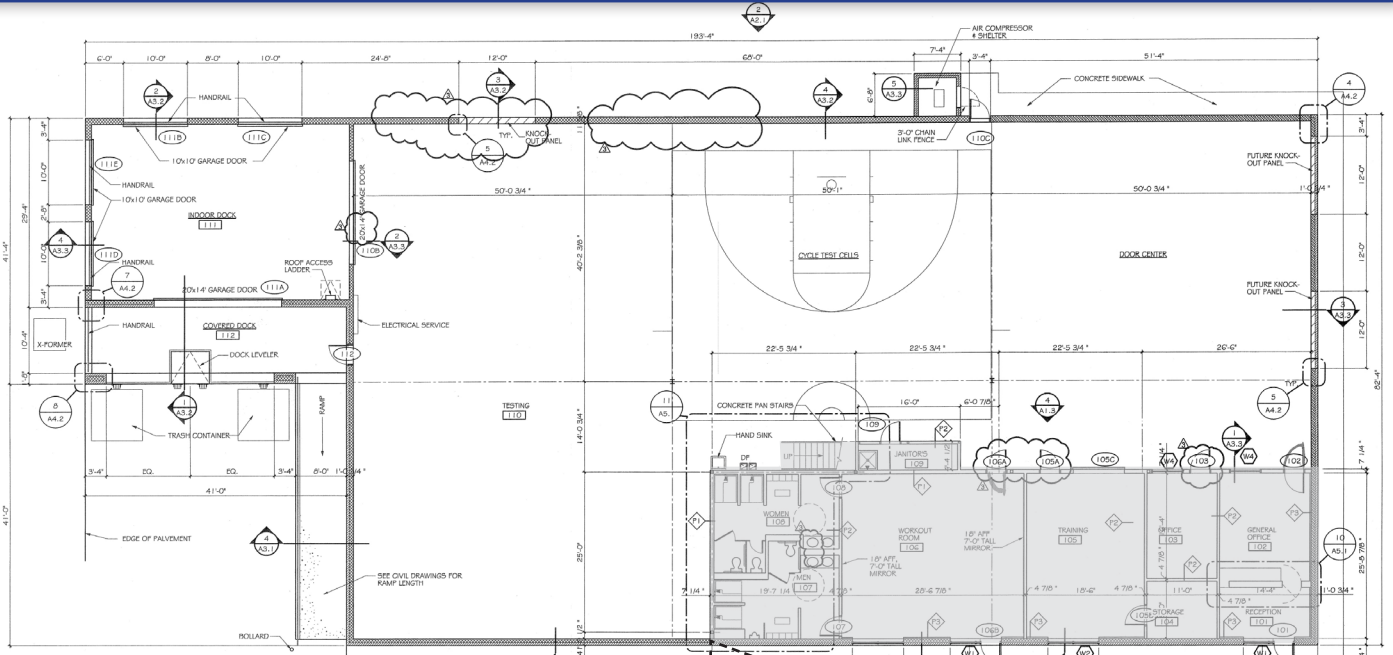
Site Plan



Interior Photos



# Floor Plan



# Demographics

					
Median Household Income	Total Businesses	Total Employees	Population	Unemployment Rate	Households

<b>1 Mile Radius</b>	\$50,624	263	11,256	2,624	7.3%	996
----------------------	----------	-----	--------	-------	------	-----

<b>3 Mile Radius</b>	\$49,170	1,173	27,925	31,827	20.2%	13,087
----------------------	----------	-------	--------	--------	-------	--------

<b>5 Mile Radius</b>	\$54,351	2,588	45,341	87,187	16.7%	34,374
----------------------	----------	-------	--------	--------	-------	--------



No warranty or representation (express or implied) is made as to the accuracy or completeness of the information set forth herein. All information is submitted subject to errors, omissions, change of price, prior lease or sale, and withdrawal without notice. All marketing material produced by the Meridian Realty Group is proprietary. Any reproduction is expressly prohibited.



THE MERIDIAN REALTY GROUP | 147 S. CHERRY STREET, SUITE 200 | WINSTON-SALEM, NC 27101

P 336.722.1986 | F 336.723.3173