



M E R I D I A N

147 S. CHERRY STREET, SUITE 200 | WINSTON-SALEM, NC 27101 | P 336.722.1986 | F 336.723.3173 | MERIDIANREALTY.COM

Strip Retail

# 305 W Mountain St - Unit G

Kernersville, NC 27284



The strategic location of this property ensures a steady flow of customers drawn to nearby amenities including Walmart, Lowes and Food lion. With its convenient access to downtown Kernersville and a diverse range of retailers catering to various needs, 305 W. Mountain Street presents an ideal setting for businesses looking to establish themselves in a bustling commercial area.

For more information:

**FOR LEASE: \$17 PSF NNN**

**Charlie H. Fulk, CCIM**  
Cfulk@meridianrealty.com  
336.480.2089

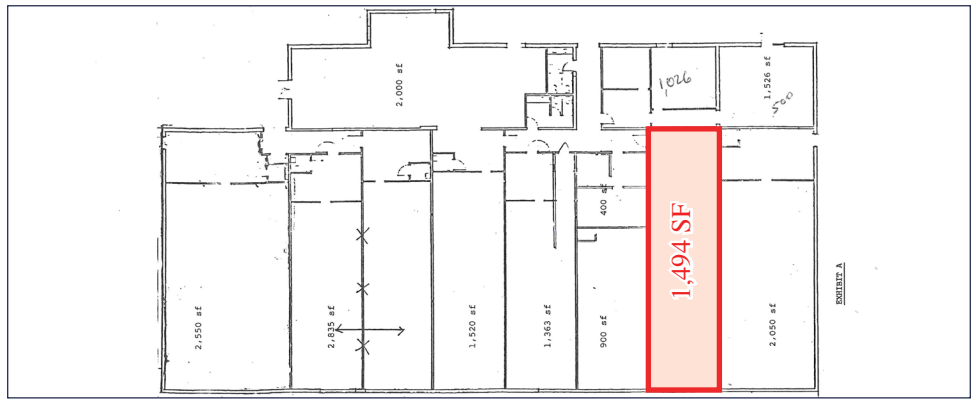
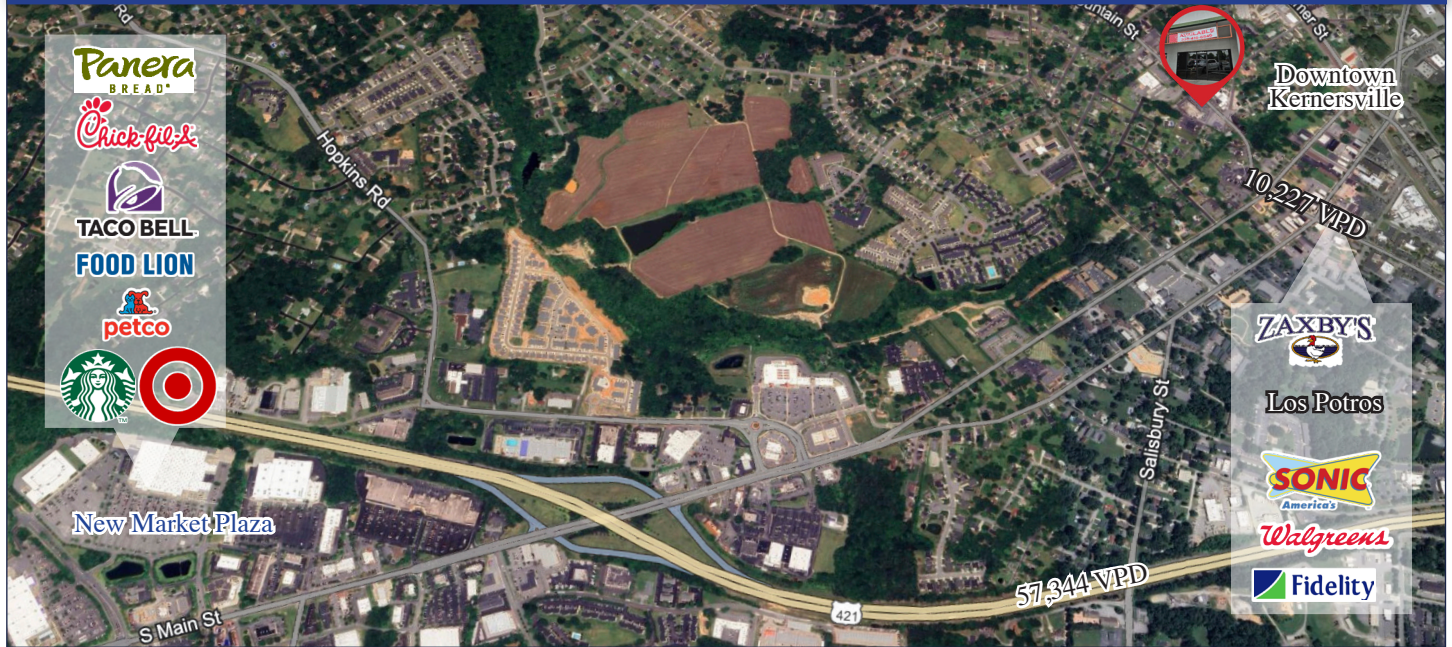
**Spencer T. Bennett, CCIM**  
Spencer@meridianrealty.com  
336.480.2327

**Samantha Brown**  
Samantha@meridianrealty.com  
336.480.2097

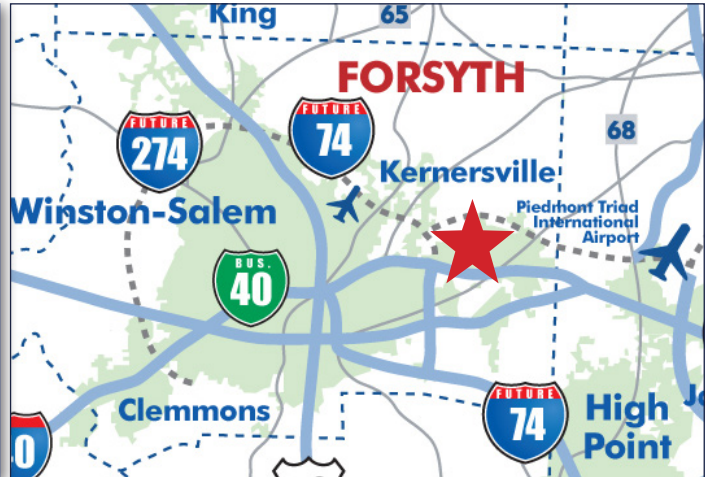
WWW.MERIDIANREALTY.COM



AERIAL



Demographics			
	1mi	3mi	5mi
Population	6,680	30,758	65,560
Household	3,297	13,524	27,125
Household Income	\$73,946	\$93,545	\$100,375



No warranty or representation (express or implied) is made as to the accuracy or completeness of the information set forth herein. All information is submitted subject to errors, omissions, change of price, prior lease or sale, and withdrawal without notice. All marketing material produced by the Meridian Realty Group is proprietary. Any reproduction is expressly prohibited.

