



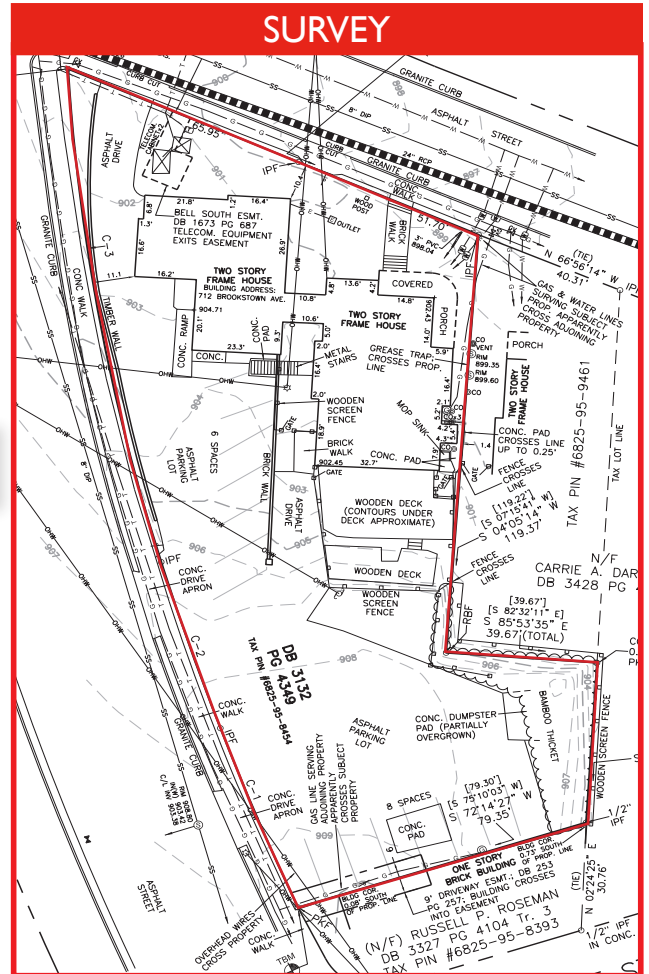
M E R I D I A N

147 S. CHERRY STREET, SUITE 200 | WINSTON-SALEM, NC 27101 | P 336.722.1986 | F 336.723.3173 | MERIDIANREALTY.COM

Residential | Office | Retail | Redevelopment

# 712 Brookstown Avenue

Winston-Salem, NC 27101



**Building likely to be demolished.** Located at the corner of Brookstown Avenue & Broad Street. One block from Truist Stadium and across the street from The Easley, West End Station, and Link Apartments, totaling 734 units. Ideal space for residential redevelopment, traditional retail, office, or restaurant.

For more information:

**John L. Ruffin, CCIM**  
Jruffin@meridianrealty.com  
336.480.2081

**FOR SALE: \$665,000**

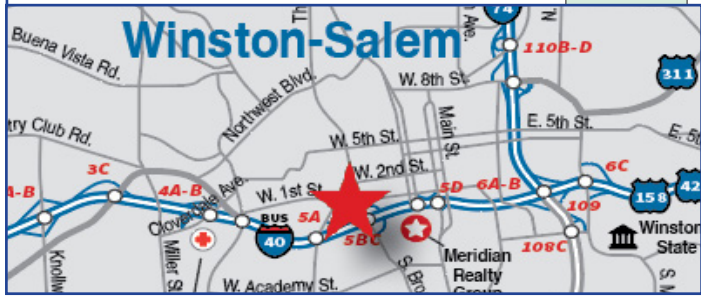
DOWNTOWN MAP



**DOWNTOWN WINSTON-SALEM  
NORTH CAROLINA**

- Hotel/Convention
- Parks/Strollway
- Offices
- Churches
- Residential
- Public Parking
- Retail

MAP NOT TO SCALE REVISED - 8-19



**PROPERTY DETAILS**

- FOR SALE: \$665,000.00
- 0.4± acres | Zoned PB
- Water/Gas/Sewer to Site
- One block from Truist Stadium
- Across from the Easley, West End Station, & Link Apartments
- Ideal for residential redevelopment, traditional retail, office, or restaurant
- Great visibility on Broad St. with 14,000 VPD

No warranty or representation (express or implied) is made as to the accuracy or completeness of the information set forth herein. All information is submitted subject to errors, omissions, change of price, prior lease or sale, and withdrawal without notice. All marketing material produced by the Meridian Realty Group is proprietary. Any reproduction is expressly prohibited.



THE MERIDIAN REALTY GROUP | 147 S. CHERRY STREET, SUITE 200 | WINSTON-SALEM, NC 27101  
P 336.722.1986 | F 336.723.3173