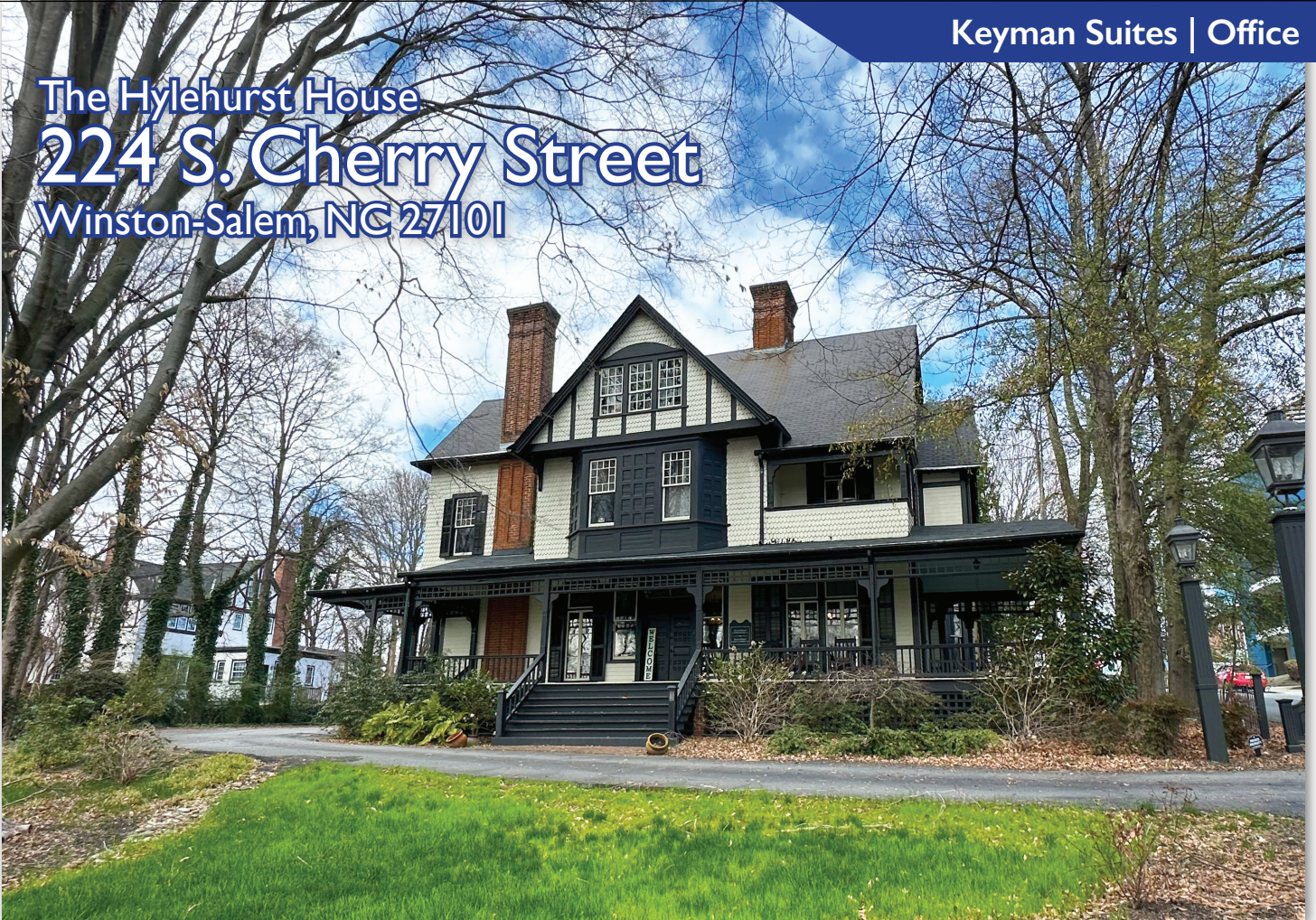


M E R I D I A N

147 S. CHERRY STREET, SUITE 200 | WINSTON-SALEM, NC 27101 | P 336.722.1986 | F 336.723.3173 | MERIDIANREALTY.COM

Keyman Suites | Office

The Hylehurst House
224 S. Cherry Street
Winston-Salem, NC 27101



Keyman Suites and Offices are available in the charming 1884 Hylehurst, listed on the National Register of Historic Places. Professionals and clients will enjoy all the amenities of downtown and easy access to Salem Pkwy and Hwy 52/I-74. Includes shared conference room, & kitchen. All suites contain a private bathroom. Other highlights include beautiful & unique interior, landscaping, and **rare on-site parking**.

For more information:

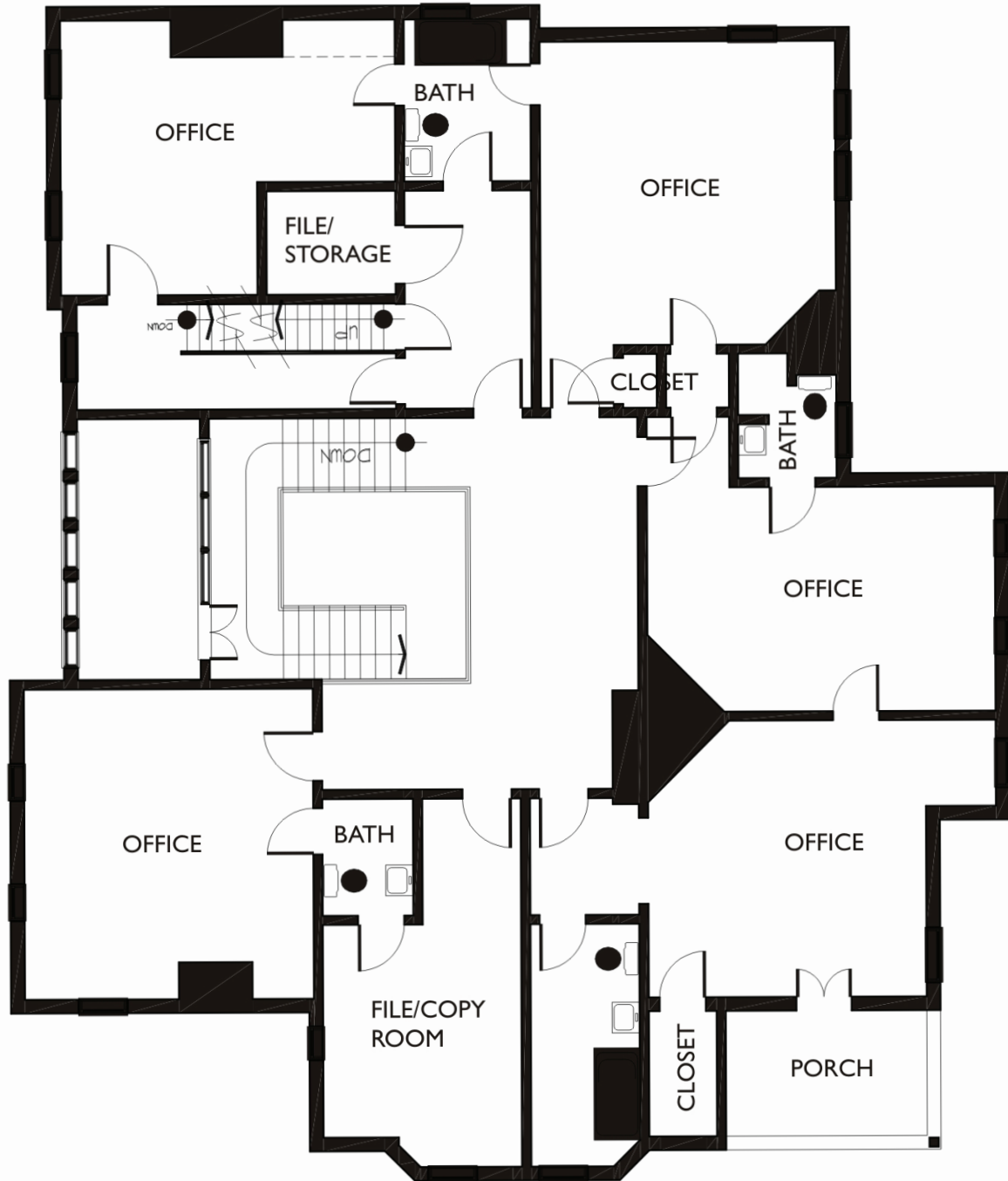
John L. Ruffin, CCIM
Jruffin@meridianrealty.com
336.480.2081

Allison Cain
Allison@meridianrealty.com
336.480.2334

FOR LEASE: See Agent for Pricing

WWW.MERIDIANREALTY.COM

Second Floor - Floor Plan



Interior Photos



Parking



Downtown Aerial



Property Details

- Numerous suite & office configurations
- Full-service rates based on area
- Immediate access to Salem Pkwy
- Unique historic structure
- On-site parking



No warranty or representation (express or implied) is made as to the accuracy or completeness of the information set forth herein. All information is submitted subject to errors, omissions, change of price, prior lease or sale, and withdrawal without notice. All marketing material produced by the Meridian Realty Group is proprietary. Any reproduction is expressly prohibited.



THE MERIDIAN REALTY GROUP | 147 S. CHERRY STREET, SUITE 200 | WINSTON-SALEM, NC 27101

P 336.722.1986 | F 336.723.3173

WWW.MERIDIANREALTY.COM