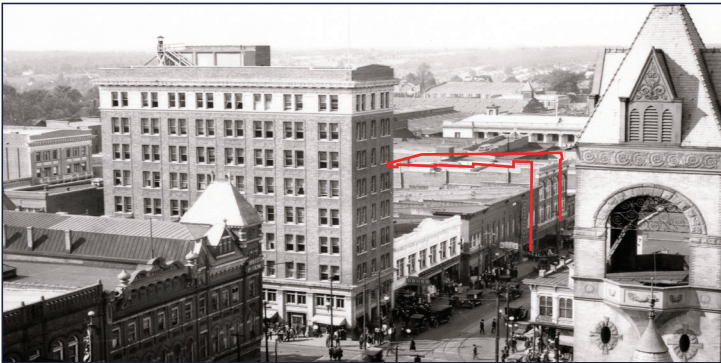


M E R I D I A N

147 S. CHERRY STREET, SUITE 200 | WINSTON-SALEM, NC 27101 | P 336.722.1986 | F 336.723.3173 | MERIDIANREALTY.COM

422 N Liberty Street Winston-Salem, NC 27101

Historic | 17,444± SF



Historic Winston-Salem landmark circa 1912. Four floors - Three above grade and basement. 9'-15' ceilings and beautiful façade behind cladding. City parking deck directly across the street. Home of Camel Pawn since 1931.

For more information:

Mark E. Fulk

Mfulk@meridianrealty.com

336.480.2080

Spencer T. Bennett, CCIM

Spencer@meridianrealty.com

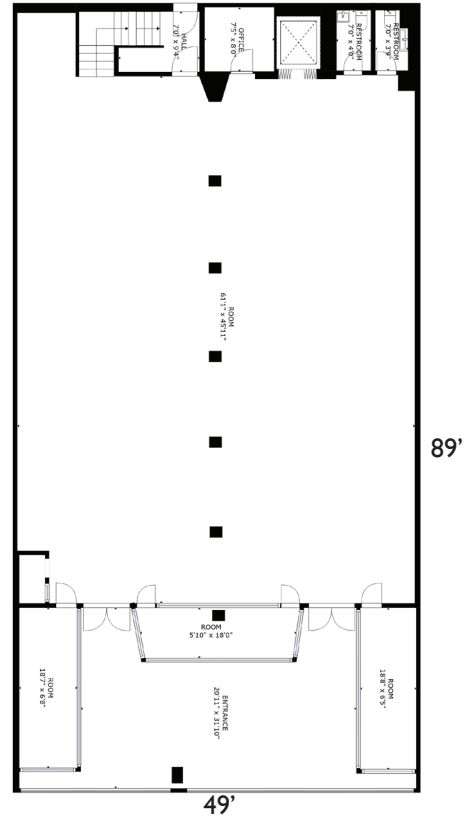
336.480.2327

FOR SALE: \$895,000

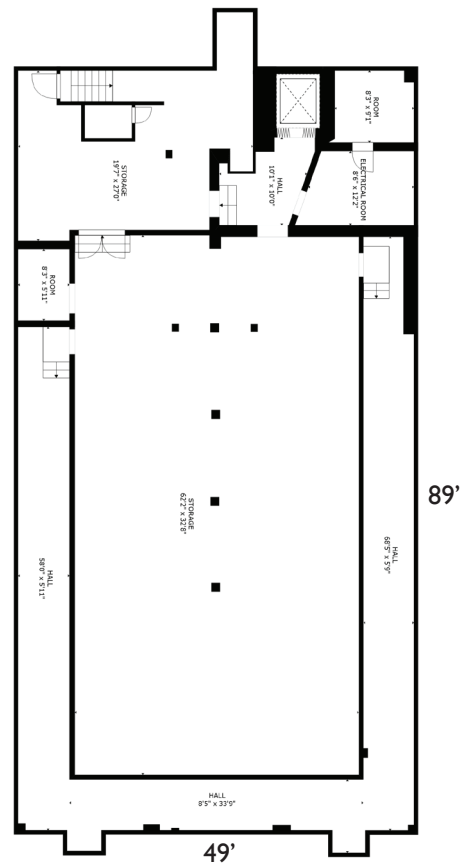
WWW.MERIDIANREALTY.COM



First Floor

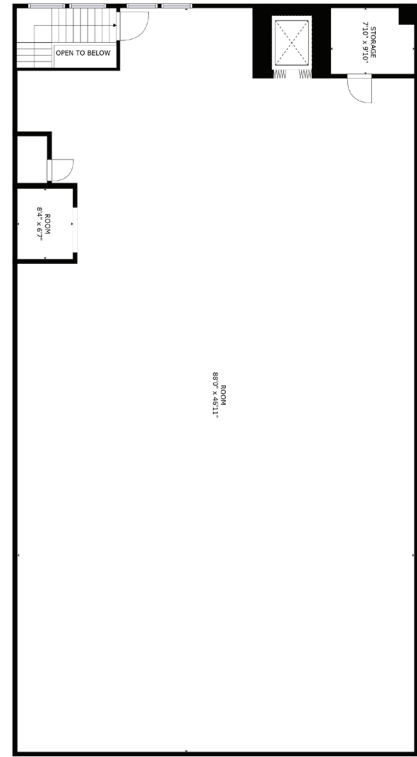


Basement





Third Floor

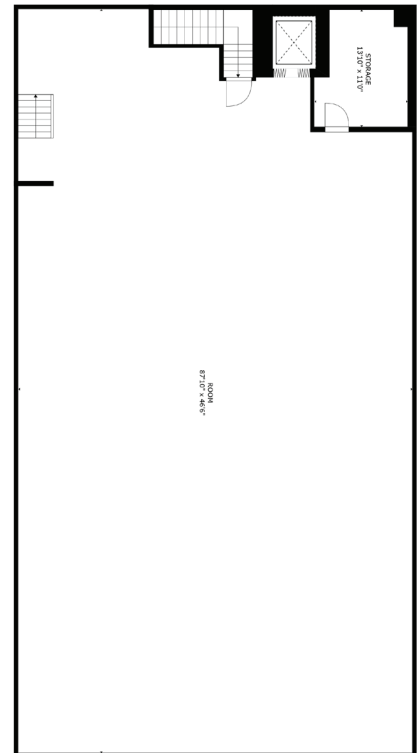


89'

49'



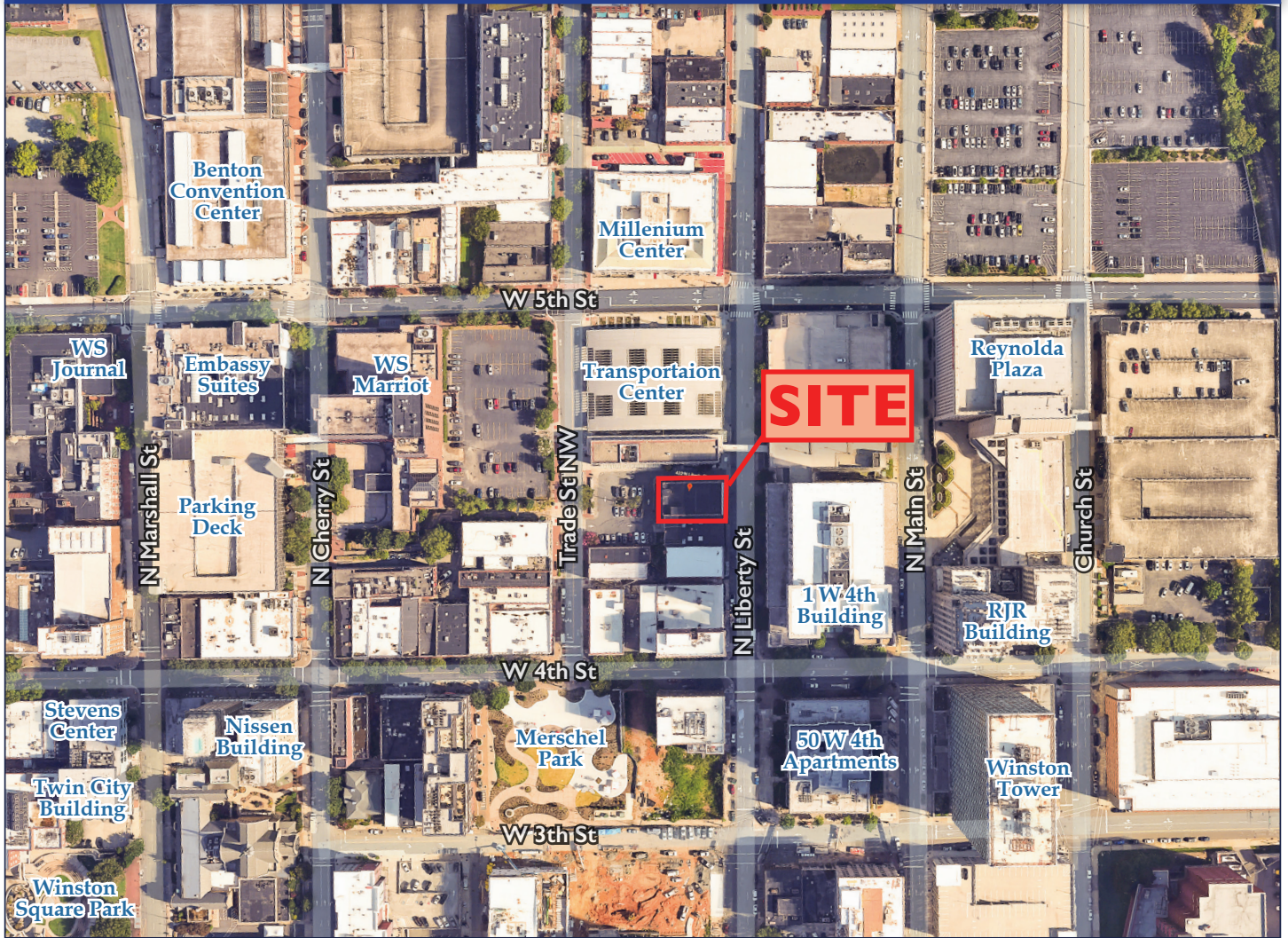
Second Floor



89'

49'

Aerial



Historic Winston-Salem landmark circa 1912



Windowed facade behind cladding



4 levels of approx. 4,361 square feet each



Ceiling heights from 9'10" — 15'



Zoned CBWO



Directly across from city parking deck



Click or Scan for
Virtual Tour

No warranty or representation (express or implied) is made as to the accuracy or completeness of the information set forth herein. All information is submitted subject to errors, omissions, change of price, prior lease or sale, and withdrawal without notice. All marketing material produced by the Meridian Realty Group is proprietary. Any reproduction is expressly prohibited.



THE MERIDIAN REALTY GROUP | 147 S. CHERRY STREET, SUITE 200 | WINSTON-SALEM, NC 27101

P 336.722.1986 | F 336.723.3173

WWW.MERIDIANREALTY.COM