

M E R I D I A N

147 S. CHERRY STREET, SUITE 200 | WINSTON-SALEM, NC 27101 | P 336.722.1986 | F 336.723.3173 | MERIDIANREALTY.COM

Retail Site: 1.4± acres

321 Summit Square Court

Winston-Salem, NC 27105



Located across Hanes Mill Road from the 400,000± SF Walmart anchored shopping center. Other nearby anchors include: Lowes Home Center, Target, Home Depot, Staples and Sam's Club. Full interchange with US 52/I-74 located ½± mile west.

For more information:

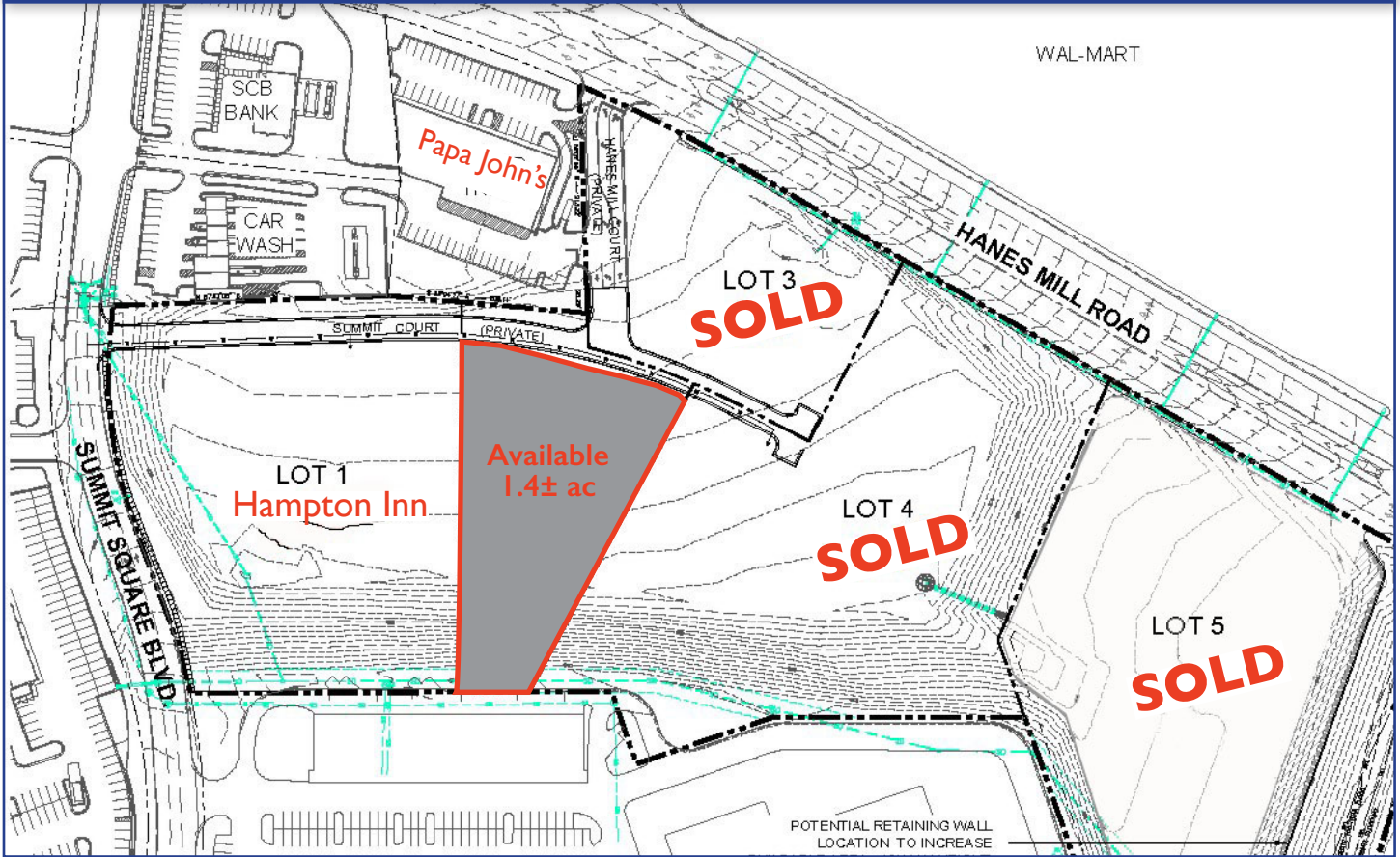
John L. Ruffin, CCIM
jruffin@meridianrealty.com
336.480.2081

Tiffany J. Secoges, CCIM
Tiffany.s@meridianrealty.com
336.480.2094

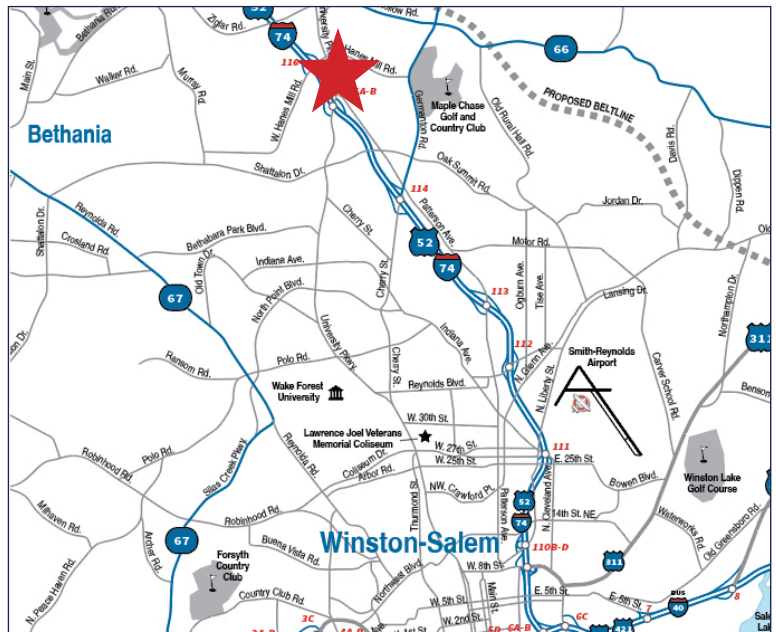
SALE/LEASE/BUILD TO SUIT

Summit Square Court at Hanes Mill Road | Winston-Salem, NC 27105

SUBDIVISION PLAN



- 1.4± acres
- Retail lot at Hanes Mill Road and University Parkway in Winston-Salem's rapidly developing northern retail market
- Graded and zoned for retail development with full utilities to the property
- Sale Price: \$645,000
- Lease Rate: \$51,500/yr
- Build to suit as negotiated



No warranty or representation (express or implied) is made as to the accuracy or completeness of the information set forth herein. All information is submitted subject to errors, omissions, change of price, prior lease or sale, and withdrawal without notice. All marketing material produced by the Meridian Realty Group is proprietary. Any reproduction is expressly prohibited.



THE MERIDIAN REALTY GROUP | 147 S. CHERRY STREET, SUITE 200 | WINSTON-SALEM, NC 27101

P 336.722.1986 | F 336.723.3173

WWW.MERIDIANREALTY.COM