

M E R I D I A N

147 S. CHERRY STREET, SUITE 200 | WINSTON-SALEM, NC 27101 | P 336.722.1986 | F 336.723.3173 | MERIDIANREALTY.COM

Medical/Professional Office Space

250 Executive Park Boulevard

Unit 100, Winston-Salem, NC 27103



Well-appointed medical / professional office condo located in Stratford Executive Park. Great access to Stratford Road, Silas Creek Parkway, and Business 40. Conveniently located near both Novant Health and Atrium Health Wake Forest Baptist Medical Center.

For more information:

William T. Bartholomew, Jr., CCIM

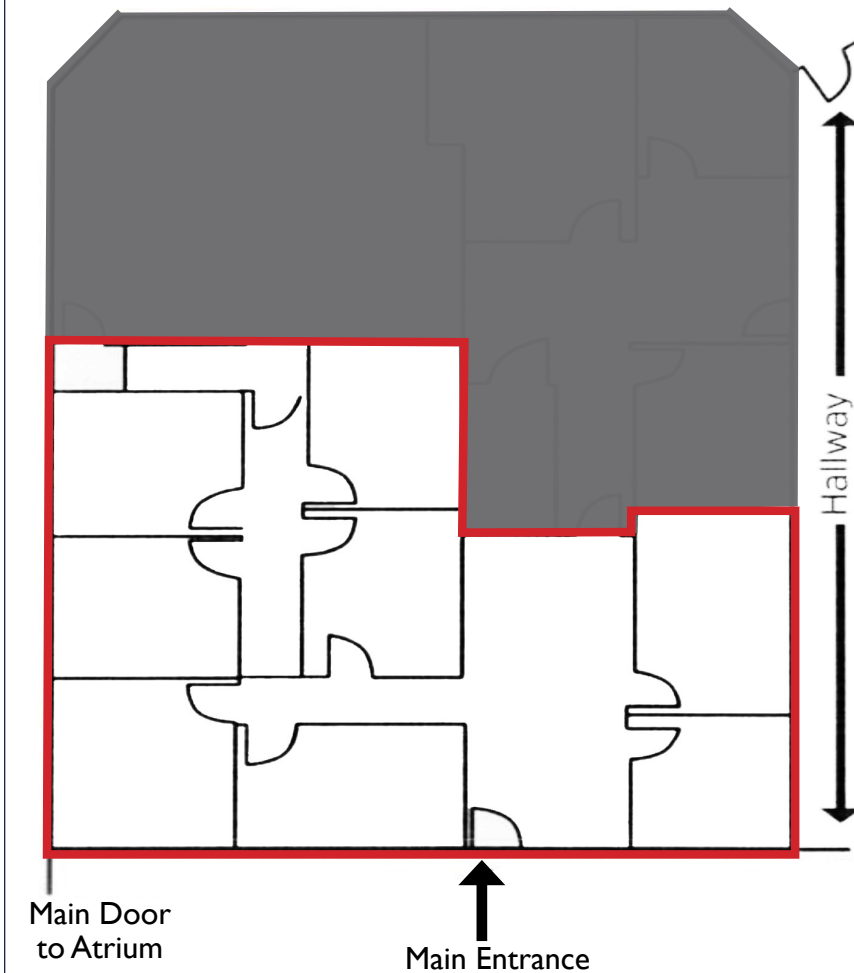
william@meridianrealty.com

336.480.2335

For Lease: \$15.00 PSF/MG

WWW.MERIDIANREALTY.COM

FLOORPLAN



INTERIOR



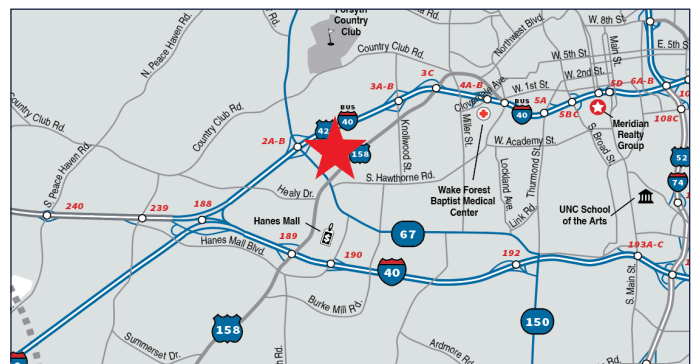
INTERIOR



HALLWAY/ATRIUM



- 1,775± SF
- Nicely appointed medical/professional office condo located in Stratford Executive Park
- Great access to Stratford Rd, Silas Creek Pkwy & BUS-40
- Convenient to both Novant and AHWFBMC
- Zoned GO



No warranty or representation (express or implied) is made as to the accuracy or completeness of the information set forth herein. All information is submitted subject to errors, omissions, change of price, prior lease or sale, and withdrawal without notice. All marketing material produced by the Meridian Realty Group is proprietary. Any reproduction is expressly prohibited.



THE MERIDIAN REALTY GROUP | 147 S. CHERRY STREET, SUITE 200 | WINSTON-SALEM, NC 27101
P 336.722.1986 | F 336.723.3173